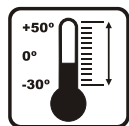


ENVIROMENT CONDITION



range of operating temperatures



store the device in a protected place



don't repair the device yourself

Name of part under inspection	Manner of inspection	Criterion for part withdrawal	Repair
Pulley function	Pulley rotation Brake rotation	Either pulley or brake runs with difficulty, seizes up, produces excess noise	Clean the pulley of soiling and lubricate pivots
All parts	Visual inspection	Worn or damaged parts Soiled or not lubricated parts	Withdraw from operation Dismantle, clean and re-assemble
Brake function	Manual control of brake motions Examine rope wear	Brake does not lock rope	Allow for brake free motion Replace worn rope Replace damaged brake

IDENTITY CARD

It is the responsibility of the user's organisation to provide the identity card and to fill in with the details required. The identity card should be filled in before the first usage of the equipment. All information on protective equipment (name, serial no., purchase date and first use date, name of user, information on repairs and inspections and withdrawal from use) must be provided in the identity card for the device. The identity card should be filled in by a person responsible for protective equipment. It is forbidden to use personal protection equipment if the identity card is not filled in.

MODEL AND TYPE OF EQUIPMENT	
REF. NUMBER	
SERIAL NUMBER	DATE OF MANUF.
USER NAME	
DATE OF PURCHASE	DATE OF PUTTING INTO OPERATION

PERIODIC EXAMINATION AND REPAIR HISTORY

DATE	REASON FOR ENTRY PERIODIC EXAMINATION OR REPAIR	DEFECTS NOTED, REPAIRS CARRIED OUT AND OTHER REVELANT INFORMATIONS	NAME AND SIGNATURE OF COMPETENT PERSON	PERIODIC EXAMINATION NEXT DUE DATE
1				
2				
3				
4				

PROTEKT, 93-403 LODZ,
ul. Starorudzka 9, POLAND,
TEL: (48 42) 680 20 83, FAX: (48 42) 680 20 93
www.protekt.com.pl

Notified body, at which the European certification was performed and which supervises the production of the equipment:
APAVE SUEUROPE SAS - BP 193 - 13322 MARSEILLE CEDEX 16 - FRANCE



Instruction manual

CAREFULLY READ THIS MANUAL BEFORE USING THE EQUIPMENT

EN 12278:2007



PROTEKT®
Pulley CD101

Notified body, which supervises the production of the equipment:
APAVE SUEUROPE SAS - CS60193 - 13322 MARSEILLE CEDEX 16 - FRANCE

STANDARDS

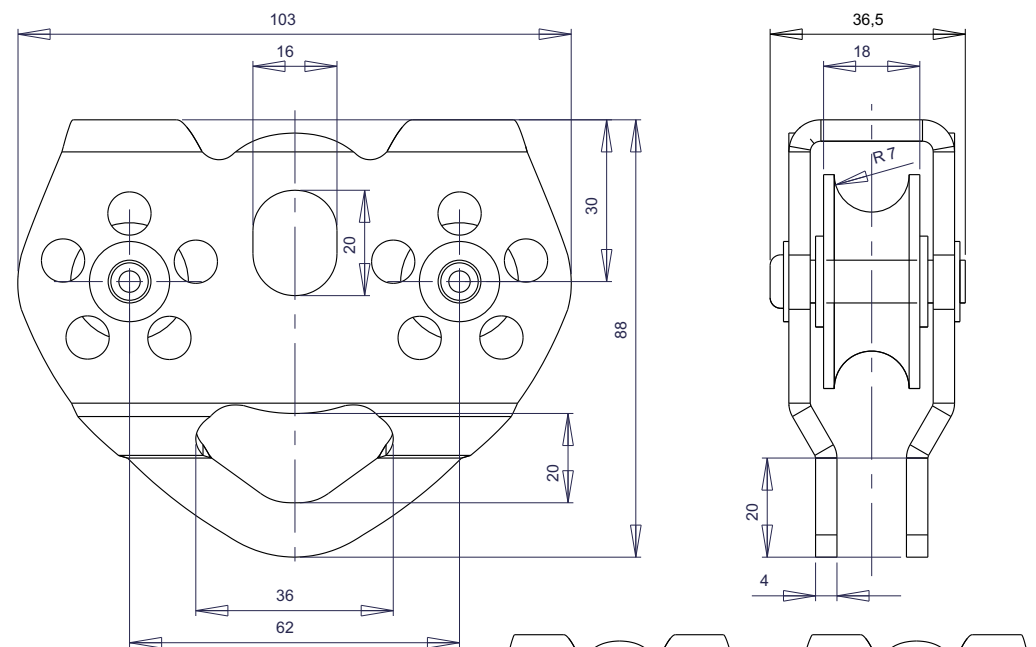
Pulley CD101 is manufactured in accordance with the following standards:
EN12278:2001 - Mountaineering equipment - Pulleys - Safety requirements and test methods

DEFINITIONS

WLL (Working Load Limit) - Working load limit maximum payload - 4,8 kN
MBS (Minimum Breaking Strength) - 24 kN
DF (Design Factor) - Safety coefficient - 5:1

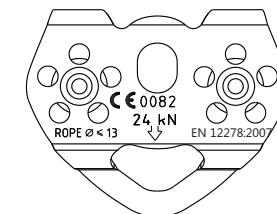
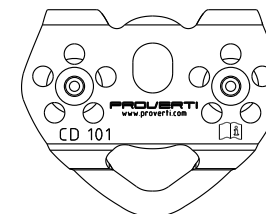
MATERIALS AND DESIGN

The device is made of aluminium alloy and polyamide composite of high strength.
Device dimensions: 103x88x36,5
Admissible rope diameter: 13 mm



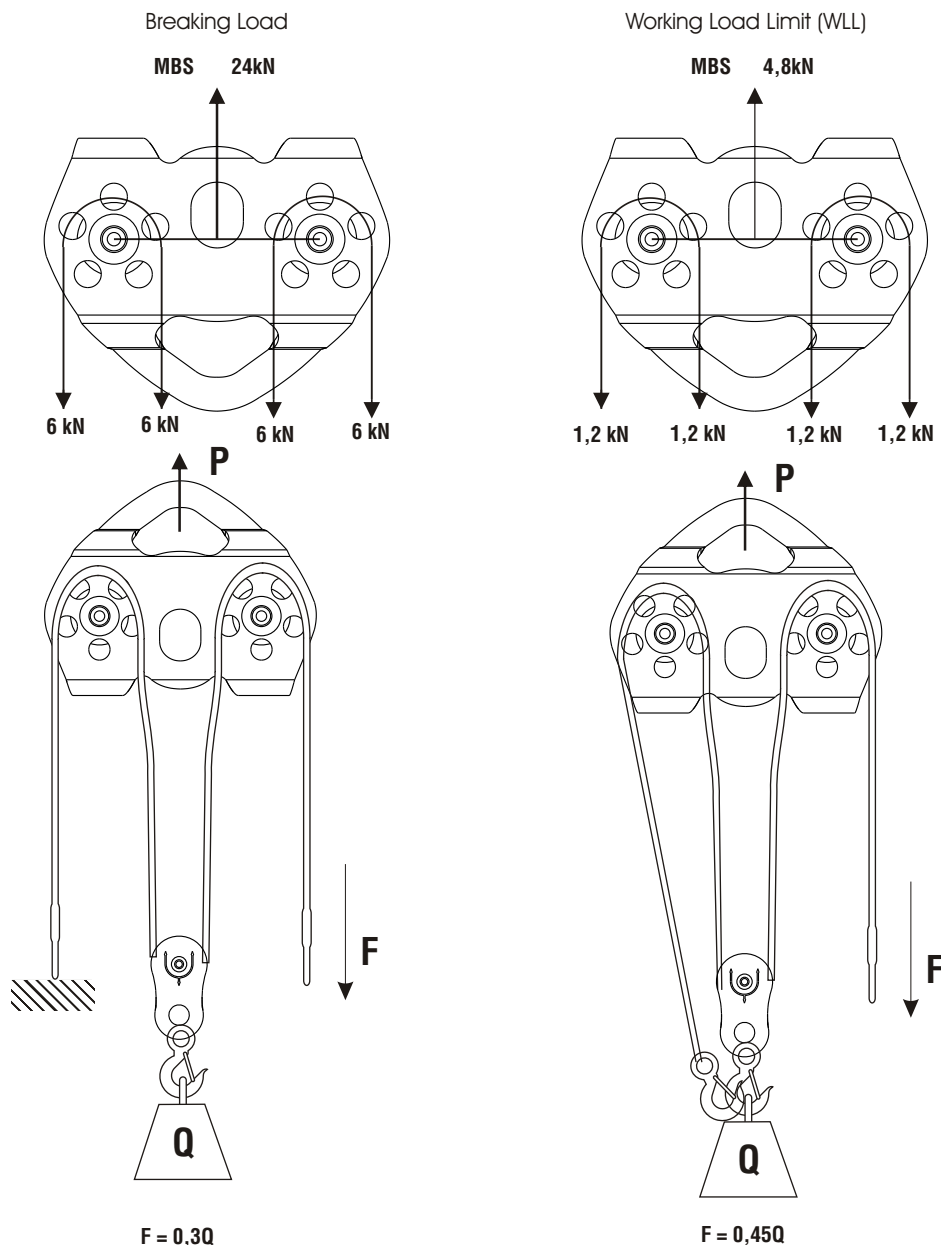
MARKING OF THE DEVICE (IDENTIFICATION)

- PULLEY CD101** — type of device
- reference no.
- Date of manufacture: mm.yyyy — month/year of manufacture
- EN 12278:2007 — number/year/class of European standard
- ROPE $\varnothing \leq 13$ — Maximum rope diameter
- MBS - 24 kN — Minimum Breaking Strength
- 03.3016 — note: read the manual carefully
- month and year of manufacture
- CE 0082** — CE mark
- PROTEKT®** — device's manufacturer or distributor mark



INTENDED USE

The pulley with working load of 480 kg is designed for manual lifting and lowering of free loads only with rope of 13 mm in diameter. The pulley's design complies with European Parliament and Council Directive 2006/42/EC and harmonized standards EN 12278:2001. **The device cannot be used to manually lift loads greater than 70% of the user's weight!**



One or more sheaves mounted in a block or a body, which can be used to link a rope (in accordance with EN892 and EN1891) or an accessory cord (in accordance with EN564) to a connector (in accordance with EN 12275) to safeguard a mountaineer, and which reduces the friction while the rope or accessory cord is moving under load.

DO NOT REMAIN DIRECTLY UNDER THE LIFTED LOAD!!!

GENERAL RULES FOR THE EQUIPMENT USE

- Make sure that the rope is not damaged and soiled.
- Don't use with wet, covered with ice or snow, lanyards.
- Make sure that the line length is adequate as for the intended application.
- Never leave any load hanged on the pulley without adequate supervision.
- The equipment should be used only by persons trained in this respect.
- The device must not be used by a person with medical condition that could affect the safety of the equipment user in normal and emergency use.
- It is forbidden to make any alterations or additions to the equipment without the manufacturer's prior written consent.
- Any repair shall only be carried out by the equipment manufacturer or his certified representative.
- The equipment shall not be used for any purpose other than that for which it is intended.
- Before each use make sure that all parts cooperate well. Periodically examine connections and fitting of the equipment components to prevent any accidental loosening or disconnecting.
- It is forbidden to use equipment in which the function of any one item is affected by or interferes with the function of another.
- Before each use of the device, a pre-use check should be carried out to ensure that it is in a serviceable condition and operates correctly.
- In particular, inspect all accessible elements of the equipment for any damages, excessive wear, corrosion, abrasion, cutting or incorrect acting. On individual devices pay particular attention to:
 - - on lanyards and textile guides: rope, loops, thimbles, connectors, regulating parts, splices;
 - - on lanyards and steel guides: rope, wires, clamps, loops, thimbles, connectors, regulating parts;
 - - on connectors: load-bearing body, rivets, main pawl, locking mechanism functionality.
- and trained in this respect.
- Regular periodic inspections are essential in terms of equipment condition and safety of users which is dependant on the equipment functionality and durability.
- During the inspection check legibility of the product marking also.
- All information on protective equipment (name, serial no., purchase date and first use date, name of user, information on repairs and inspections and withdrawal from use) must be provided in the identity card for the device. It is the responsibility of the user organisation to provide the identity card and to fill in the details required. The identity card should be filled in by a person responsible for protective equipment. It is forbidden to use the protection equipment if the identity card is not filled in.
- If the product is re-sold outside the original country of destination the reseller must provide instructions for use, for maintenance, for periodic inspection and for repair in language of the country in which the product is to be used.
- The device must be withdrawn from use immediately if any doubts arise in regard of its condition and proper operation. The device mustn't be used until the equipment manufacturer carried out the detailed inspection and gave his written consent on the equipment to be used again.
- Anchor point (device) should have a stable structure and position so as to prevent a possibility of the load fall and minimize a free fall distance. The equipment anchor point should be located above the user's work station. The shape and construction of the anchor device/point shall not allow for a self-acting disconnection of the equipment.
- There are many hazards that may affect the performance of the equipment and corresponding safety precautions that have to be observed during equipment utilization, especially trailing or looping of lanyards or lifelines over sharp edges, pendulum falls, electrical conductivity, any defects like cutting, abrasion, corrosion, extremes of temperature, exposure to atmospheric conditions, chemical reagents.
- The protective equipment must be transported in the package (e.g.: bag made of moisture-proof textile or foil bag or cases made of steel or plastic) to protect it against damage or moisture.
- The equipment should be cleaned without causing adverse effect on the materials used in the manufacture of the equipment. Wash textile products with water only. When the equipment becomes wet, either from being in use or when due to the cleaning, it shall be allowed to dry naturally, and shall be kept away from direct heat. In metallic products some mechanic parts (springs, hinges, pawls, etc.) can be regularly slightly lubricated to ensure better operation.
- The equipment should be stored in well-ventilated rooms, protected from direct light, UV degradation, dust, sharp edges, extreme temperatures and aggressive chemical substances.

PERIODIC INSPECTION

The pulley should be subject to a daily check and regular inspections. The daily check is to be carried out by service personnel or by a person in charge.

TIME OF USE

There is no limit for the time of use; however a textile rope operating with the device should not be in use for period longer than 5 years.