

- there are many hazards that may affect the performance of the equipment and corresponding safety precautions that have to be observed during equipment utilization, especially: - trailing or looping of lanyards or lifelines over sharp edges, - any defects like cutting, abrasion, corrosion, - climatic exposure, - pendulum falls, - extremes of temperature, - chemical reagents, - electrical conductivity.
- personal protective equipment must be transported in the package (e.g.: bag made of moisture-proof textile or foil bag or cases made of steel or plastic) to protect it against damage or moisture.
- the equipment can be cleaned without causing adverse effect on the materials in the manufacture of the equipment. For textile products use mild detergents for delicate fabrics, wash by hand or in a machine and rinse in water. Plastic parts can be cleaned only with water. When the equipment becomes wet, either from being in use or when due cleaning, it shall be allowed to dry naturally, and shall be kept away from direct heat. In metallic products some mechanic parts (spring, pin, hinge, etc.) can be regularly slightly lubricated to ensure better operation.
- Other maintenance and cleaning procedures should be adhered to detailed instructions stated in the manual of the equipment.
- personal protective equipment should be stored loosely packed, in a well-ventilated place, protected from direct light, ultraviolet degradation, damp environment, sharp edges, extreme temperatures and corrosive or aggressive substances.
- check before each use the legibility of the product markings.

IT IS THE RESPONSIBILITY OF THE USER ORGANISATION TO PROVIDE THE IDENTITY CARD AND TO FILL IN THE DETAILS REQUIRED. THE IDENTITY CARD SHOULD BE FILLED IN ONLY BY A COMPETENT PERSON RESPONSIBLE FOR PROTECTIVE EQUIPMENT. THE IDENTITY CARD SHOULD BE FILLED IN BEFORE THE FIRST USE OF THE EQUIPMENT. ANY INFORMATION ABOUT THE EQUIPMENT LIKE: PERIODIC INSPECTIONS, REPAIRS, REASONS OF EQUIPMENT'S WITHDRAWN FROM USE SHALL BE NOTED. THE

IDENTITY CARD

MODEL AND TYPE OF EQUIPMENT

REF. NUMBER

SERIAL NUMBER

DATE OF MANUF.

USER NAME

DATE OF PURCHASE

DATE OF PUTTING INTO OPERATION

PERIODIC EXAMINATION AND REPAIR HISTORY

DATE	REASON FOR PERIODIC EXAMINATION OR REPAIR	DEFECTS NOTED, REPAIRS CARRIED OUT AND OTHER RELEVANT INFORMATIONS	NAME AND SIGNATURE OF COMPETENT PERSON	PERIODIC EXAMINATION NEXT DUE DATE
1				
2				
3				
4				

PROTEKT, 93-403 LODZ,
ul. Starorudzka 9, POLAND,
TEL: (48 42) 680 20 83,
FAX: (48 42) 680 20 93
www.protekt.com.pl

The European certificate issued by
Apave Exploitation France SAS (n°0082), 6 Rue du Général Audran, 92412
COURBEVOIE cedex France

Addition 01/10.2013

TreeUP
Tree Climbing Technology
series

Instruction Manual
Ref. AZ 600 090
CE 0082 EN 795:2012 Type B

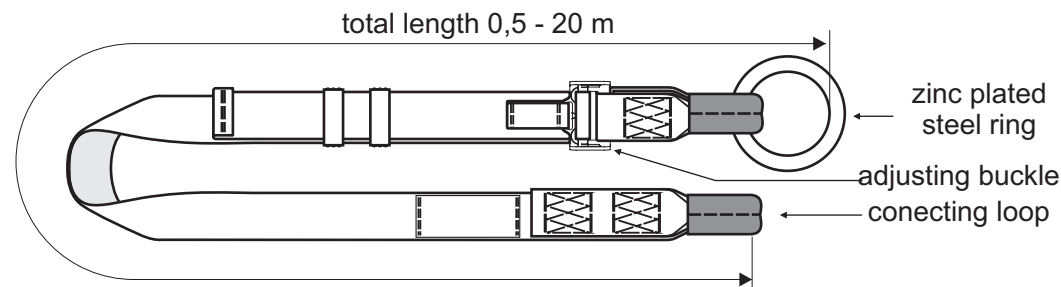
PROTEKT
ADJUSTABLE WEBBING
SLING **AZ600**

ESSENTIAL FEATURES

The Adjustable Webbing Sling is a component of personal protective equipment against falls from a height. It is designed to use as an anchorage device type B for temporary attaching fall arrest system to a rigid

CONSTRUCTION

The Adjustable Webbing Sling is made of polyester webbing equipped with steel ring on one end. On ring's end webbing is equipped with steel adjusting buckle. The branch sling is manufactured of length from 0,5 m to 20 m.



TIME OF USAGE

The Adjustable Webbing Sling can be used for 5 years. After this period lanyard must be made a subject to detailed manufacturer's inspection. The inspection can be carried out by:

- manufacturer
- or person recommended by manufacturer
- or company recommended by manufacturer.

During the inspection it will be established time of usage till next fabric inspection.

The lanyard must be withdrawn from use immediately and destroyed when it has been used to arrest a fall.

WITHDRAWN FROM USE

The webbing sling must be withdrawn from use and destroyed when:

- it was used more than 5 years from the date of putting it into operation.
- it was used to arrest a fall.
- any mechanical, chemical or thermal defects have appeared.

MARKING

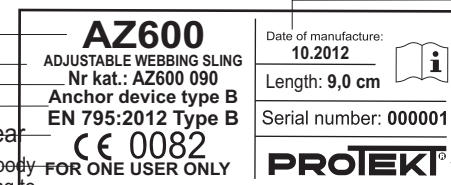
Name of the product

Reference number

Type of the device

European standards and year

CE mark and number of notified body inspecting the equipment according to the article 11 of Directive 89/686/EEC



Month and year of manufacture

Caution: read the manual

Manufacturer or distributor

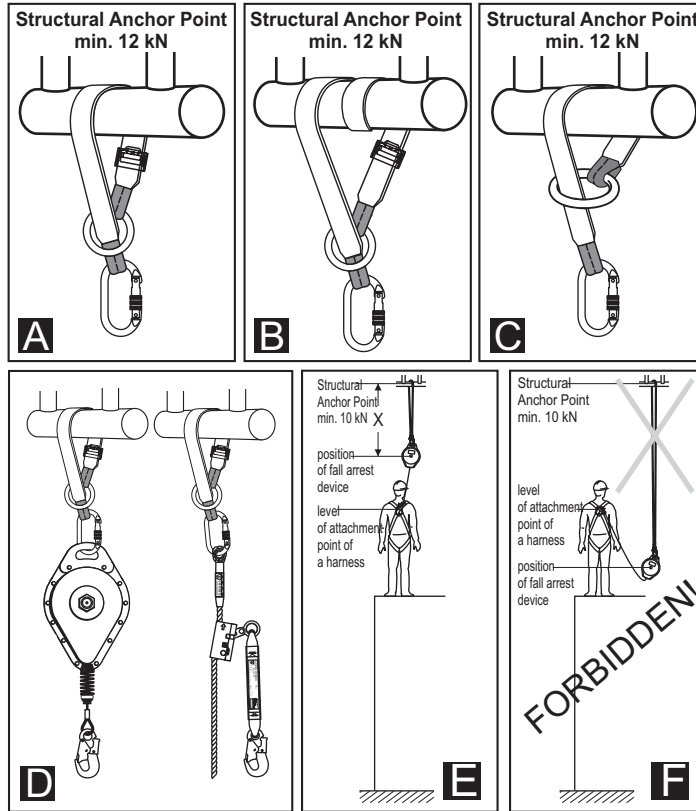
next inspection
Don't use the device after this date
Attention: Before the first use
mark the date of the first inspection
(date of first use +12 months,
e.g. first use 01.2014 - mark inspection 01.2015)



next inspection label

INSTALLING AZ600 AS ANCHOR DEVICE /WEBBING SLING

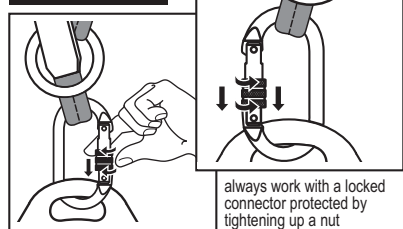
- Put webbing sling around a construction element **A** (structural anchor point) - drawing
Avoid sharp edges.
- It is allowed to put **B** webbing sling around the construction element few times to shorten the length of a lanyard - drawing **C**
- It is allowed to put one loop through the ring and tighten on anchor point. **D** connect safety lanyard to free loop, - drawing
- Connect a fall arrest device (e.g. retractable type fall arrester, **E** gated type fall arrester etc.) to the lanyard's snap hook - drawing
- It must be taken into consideration that during using connecting lanyard an additional distance "X" appears between structural anchor point to which the lanyard is connected and fall arrest device - drawing **F**



Attention:

Use only a certified (EN 362), oval type connectors which are made of bar of minimal diameter 10 mm

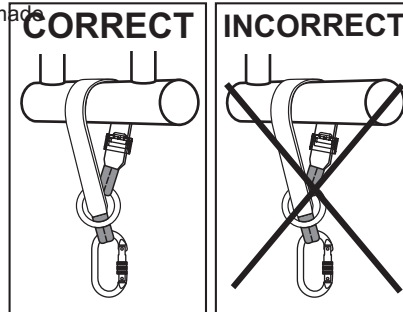
Attention!



always work with a locked connector protected by tightening up a nut

No structure

an anchor point should be situated above the working place and the shape of the structural anchor point should not let self-acting



Using the webbing sling in connection with fall arrest system must be compatible with use instructions of the fall arrest systems and obligatory standards:

- EN 361 - for safety harness,
- EN 353-1, EN 353-2, EN 354, EN 355, EN 360, EN 362 - for fall arrest systems,
- EN 795 - for anchorages,
- EN 358 - for work positioning systems.

THE ESSENTIAL PRINCIPLES OF USE OF PPE AGAINST FALLS FROM A HEIGHT

- the anchor device is for the use of one person only.
- personal protective equipment shall only be used by a person trained and competent in its safe use.
- personal protective equipment must not be used by a person with medical condition that could affect the safety of the equipment user in normal and emergency use.
- a rescue plan shall be in place to deal with any emergencies that could arise during the work.
- it is forbidden to make any alterations or additions to the equipment without the manufacturer's prior written consent.
- any repair shall only be carried out by equipment manufacturer or his certified representative.
- personal protective equipment shall not be used outside its limitations, or for any purpose other than that for which it is intended.
- personal protective equipment should be a personal issue item.
- before use ensure about the compatibility of items of equipment assembled into a fall arrest system. Periodically check connecting and adjusting of the equipment components to avoid accidental loosening or disconnecting of the components.
- it is forbidden to use combinations of items of equipment in which the safe function of any one item is affected by or interferes with the safe function of another.
- before each use of personal protective equipment it is obligatory to carry out a pre-use check of the equipment, to ensure that it is in a serviceable condition and operates correctly before it is used.
- during pre-use check it is necessary to inspect all elements of the equipment in respect of any damages, excessive wear, corrosion, abrasion, cutting or incorrect acting.
- after every 12 months of utilization, personal protective equipment must be withdrawn from use to carry out periodical detailed inspection. The periodic inspection must be carried out by a competent person for periodic inspection. The periodic inspection can be carried out also by the manufacturer or his authorized representative.
- regular periodic inspections are the essential for equipment maintenance and the safety of the users which depends upon the continued efficiency and durability of the equipment.
- during periodic inspection it is necessary to check the legibility of the equipment marking.
- it is essential for the safety of the user that if the product is re-sold outside the original country of destination the reseller shall provide instructions for use, for maintenance, for periodic examination and for repair in language of the country in which the product is to be used.
- personal protective equipment must be withdrawn from use immediately when any doubt arise about its condition for safe use and not used again until confirmed in writing by equipment manufacturer or his representative after carried out the detailed inspection.
- personal protective equipment must be withdrawn from use immediately and destroyed when it have been used to arrest a fall.
- a full body harness is the only acceptable body holding device that can be used in a fall arrest system.
- in full body harness use only attaching points marked with big letter "A" to attach a fall arrest system.
- the anchor device or anchor point for the fall arrest system should always be positioned, and the work carried out in such a way, as to minimise both the potential for falls and potential fall distance. The anchor device/point should be placed above the position of the user. The shape and construction of the anchor device/point shall not allowed to self-acting disconnection of the equipment. It is recommended to use certified and marked structural anchor point complied with EN795.
- it is obligatory to verify the free space required beneath the user at the workplace before each occasion of use the fall arrest system, so that, in the case of a fall, there will be no collision with the ground or other obstacle in the fall path. The required value of the free space should be taken from instruction manual of used equipment.
- when the anchor device is used as part of a fall arrest system, the user has to be equipped with for example retractable fall arrester or energy absorber a means of limiting the maximum dynamic forces exerted on the user during the arrest of a fall to a maximum of 6 kN.
- it is recommended the anchor device is marked with the date of the next or last inspection.
- the anchor device should only be used for personal fall protection equipment and not for lifting equipment.
- in full body harness use only attaching points marked with big letter "A" to attach a fall arrest system. Marking like "A/2" or a half of "A" means the necessity of attaching a fall arrest system to both attaching points together simultaneously. It is strictly forbidden to attach a fall arrest system to the single attaching point marked "A/2" or a half of "A". See drawings below:

