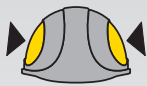


ATRA 20

Industrial safety helmet with internal visor



EN 166 / EN 397:2012+A1:2012



✓ LD - Lateral Deformation



✓ Impact resistance



✓ MM - Resistance to molten metal splash



✓ Tested at very low temperature (-30°C)



✓ Lightweight and durable ABS plastic construction; weight **550 g**



EN 50365: 2002

✓ Designed for work on low-voltage installations to **1000V AC** or **1500V DC**



retractable, internal visor



circumference adjustment range: 51-63 cm



adjustable 4-point chin strap

Available colors:

white

yellow

orange

yellow HV

navy blue

black

red



WWW.PROTEKT.UK



ATRA 20

Industrial safety helmet
with internal visor

Internal, retractable visor provides good, basic protection of the sight during everyday works.

EN 397:2012+A1:2012

EN 166

- ✓ 1 optical class,
- ✓ Resistance to medium energy impact 120 m/s **(B)**

RETRACTABLE VISOR



WWW.PROTEKT.UK

PROTEKT[®]

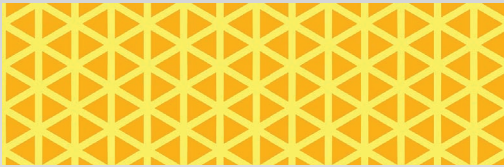
OFFICE - Skromna 6, 93-405 Lodz, POLAND / **CORRESPONDENCE ADDRESS** - PROTEKT, Starorudzka 9, 93-403 Lodz, POLAND
SALES DEPARTMENT Phone +48 42 29-29-500, export@protekt.com.pl, fax +48 42 680-20-93
WAREHOUSE - Gombrowicza 6, 93-405 Lodz, POLAND



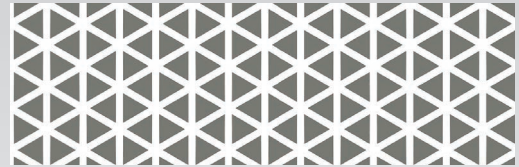
ATRA 20 / ATRA 20S

Reflective stickers for helmets Atra 20 / Atra 20S.

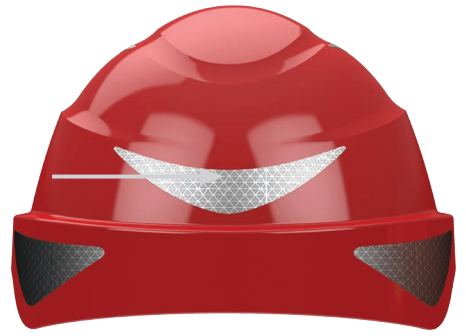
Prismatic (triangular) pattern.



Gold color



Silver color



WWW.PROTEKT.UK






PROTEKT[®]

OFFICE - Skromna 6, 93-405 Lodz, POLAND / CORRESPONDENCE ADDRESS - PROTEKT, Starorudzka 9, 93-403 Lodz, POLAND
SALES DEPARTMENT Phone +48 42 29-29-500, export@protekt.com.pl, fax +48 42 680-20-93
WAREHOUSE - Gombrowicza 6, 93-405 Lodz, POLAND



ATRA 20 / ATRA 20S

Comparison of the main parameters

		ATRA 10	ATRA 10V	ATRA 10 + ATRA S10	ATRA 20	ATRA 20S
	STANDARDS / requirements					
	EN 397					
	Chinstrap included	✓	✓	✓	✓	✓
	Ventilation holes		✓			
Additional requirements	Very low temperature (-20/-30°C)	-30°C	-30°C	-30°C	-30°C	-30°C
	Electroinsulation (440V)	✓		✓	✓	✓
	Lateral Deformation (LD)	✓	✓	✓	✓	✓
	Resistance to splashes of molten metal				✓	✓
	EN 50365					
	Electroinsulation to 1000V AC/1500 DC	✓		✓	✓	✓
	EN 166					
Mandatory requirements	Internal visor retractable under the helmet				✓	✓
	Optical class (I, II lub III)			I	I	I
	Injection molded visor / face shield				✓	✓
	Ultraviolet protection filters					✓
	Low energy impact F (45 m/s)			✓	✓	✓
	Medium energy impact B (120 m/s)			✓	✓	✓
	High energy impact A (190 m/s)					✓
	Protection against molten metals and hot solids			✓		✓
	Protection against liquid splashes and drops			✓		✓
	Protection against arc flash protection					✓
	Lateral protection			✓	✓	✓
	GS-ET-29:2019/06					
	Arc flash protection					class 1

WWW.PROTEKT.UK